

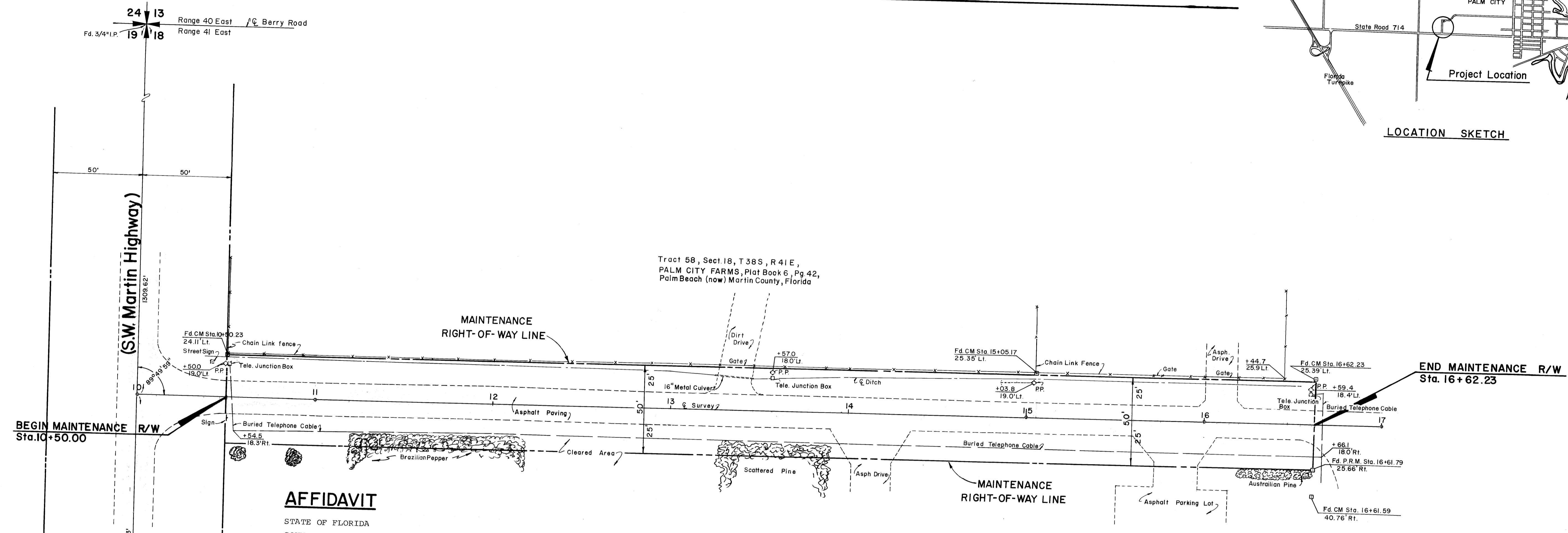
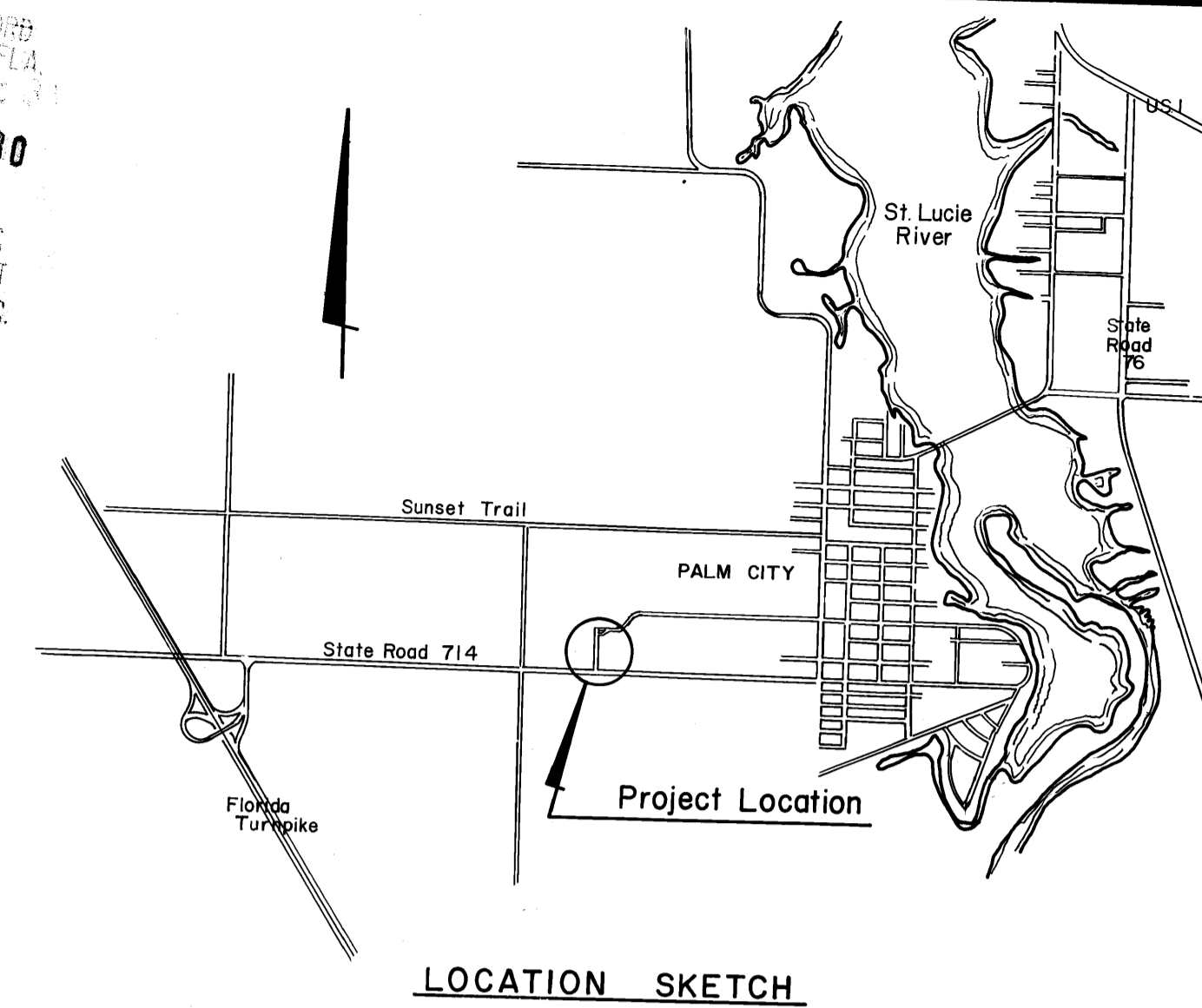
See Surveyors Affidavit in O.A. bk 464 pg 2440
 Marsha Stiller
 Clerk of Courts
 by: Shukry Johnson
 D.C.
 2/26/79

FILED FOR RECORD
 MARTIN COUNTY, FLA.
 79 FEB 13 AM 1:30
 LOUISE V. ISAACS
 CLERK OF CIRCUIT COURT
 BY: _____ D.C.

PB 7 pg 72

Sect. 18, Twp. 37 S., Rge. 41 E NORTH

MAINTENANCE MAP, S.W. Palm City Elementary School Ave.



AFFIDAVIT

STATE OF FLORIDA
 COUNTY OF MARTIN

BEFORE ME, THE UNDERSIGNED AUTHORITY, DULY AUTHORIZED IN THE STATE AND COUNTY AFORESAID TO ADMINISTER OATHS AND TAKE ACKNOWLEDGEMENTS, PERSONALLY APPEARED C.E. RAULERSON, AS ROAD SUPERINTENDENT, WHO, AFTER BEING DULY SWORN, DEPOSES AND SAYS ON OATH AS FOLLOWS:

1. I, THE UNDERSIGNED, BEING COUNTY ROAD SUPERINTENDENT OF MARTIN COUNTY, FLORIDA, AND AS SUCH A DULY QUALIFIED EMPLOYEE OF SAID MARTIN COUNTY, DO AVER THAT I AM THOROUGHLY FAMILIAR WITH ALL OF THE ROADS IN MARTIN COUNTY, FLORIDA AND WITH THE PROGRAM OF MAINTENANCE AND IMPROVEMENT THEREOF. THAT I HAVE BEEN ASSOCIATED IN PRESENT OR SIMILAR CAPACITY ON ROAD PROGRAMS IN SAID COUNTY FOR A PERIOD IN EXCESS OF 19 YEARS.

2. THAT TO MY PERSONAL KNOWLEDGE AND OBSERVATION THE ROAD KNOWN AND DESCRIBED AS S.W. PALM CITY ELEMENTARY SCHOOL AVENUE, LYING NORTH OF STATE ROAD 714 ALL WITHIN MARTIN COUNTY AS LOCATED AS SHOWN ON THE ABOVE MAP WAS CONSTRUCTED BY AND HAS BEEN MAINTAINED AND REPAIRED CONTINUOUSLY AND UNINTERRUPTED FOR 10 YEARS BY THE MARTIN COUNTY ROAD AND BRIDGE DEPARTMENT. FURTHER THAT THE MAINTENANCE OF SAID PORTION OF S.W. PALM CITY ELEMENTARY SCHOOL AVENUE CONSISTS OF MOWING, PERIODIC MAINTENANCE OF SWALE, GRADING OF SHOULDER, AND PATCHING OF EXISTING PAVEMENT.

FURTHER AFFIANT SAYETH NOT.
 THIS 6 DAY OF Feb, 1979.

C.E. Raulerson
 ROAD SUPERINTENDENT

ACKNOWLEDGEMENT

SWORN TO AND SUBSCRIBED BEFORE ME THIS 6th DAY OF FEBRUARY, 1979 BY
 C.E. RAULERSON AS SUPERINTENDENT, AT STUART, MARTIN COUNTY, FLORIDA.
 WITNESS MY HAND AND OFFICIAL SEAL IN THE COUNTY AND STATE LAST AFORESAID
 THIS 6th DAY OF FEBRUARY, 1979.

Carlye J. Burt
 NOTARY PUBLIC, STATE OF FLORIDA AT LARGE
 MY COMMISSION EXPIRES: Aug 5, 1980

DEDICATION

PURSUANT TO SECTION 95.361(1), FLORIDA STATUTES, (1977) THE PORTIONS OF S.W. PALM CITY ELEMENTARY SCHOOL AVENUE BETWEEN STATION 10+50.00 AND STATION 16+62.23 AND BETWEEN THE MAINTENANCE RIGHT-OF-WAY LINES, ALL WITHIN MARTIN COUNTY AND LOCATED AS SHOWN ON THE ABOVE MAP, SHALL HEREAFTER BE DEEMED DEDICATED TO THE PUBLIC AND ALL RIGHT, TITLE, EASEMENTS AND APPURTENANCES ARE HEREBY VESTED IN MARTIN COUNTY, FLORIDA.

CERTIFIED BY: BOARD OF COUNTY COMMISSIONERS

Louise V. Isaacs
 LOUISE V. ISAACS, CLERK
 By Charlotte Curkey D.C.

By: _____
 FRANK A. WACHA, CHAIRMAN

ACCEPTANCE

ACCEPTED FOR FILES AND RECORDED IN THE PUBLIC RECORDS OF MARTIN COUNTY, FLORIDA. THIS 13th DAY OF February A.D. 1979 IN PLAT BOOK 7 PAGE 72.

Louise V. Isaacs
 CLERK OF CIRCUIT COURT OF MARTIN COUNTY, FLORIDA
 By Charlotte Curkey D.C.

File No. 331535

SURVEYOR'S CERTIFICATION

I HEREBY CERTIFY THAT THE SURVEY INFORMATION SHOWN HEREON IS A CORRECT REPRESENTATION OF A SURVEY MADE UNDER MY DIRECTION AND THAT IT IS CORRECT TO THE BEST OF MY KNOWLEDGE AND BELIEF.

George C. Young
 GEORGE C. YOUNG, JR.
 REGISTERED LAND SURVEYOR
 FLORIDA CERTIFICATE NO. 3036

MARTIN COUNTY
 ENGINEERING DEPARTMENT
MAINTENANCE MAP
 S.W. Palm City Elementary School Ave.

SCALE 1" = 30'	DATE 10-5-1978
DESIGNED BY	FILE & DRAWING NO. 78-3-1126
DRAWN BY R.W.B.	SHEET
CHECKED BY	OF
NOTE BOOK NO.	

NO.	REVISIONS	DATE	BY	SEAL

